

DESIGNED FOR UNINTERRUPTED WORK FLOW

Probe with Collision-Protection System

Both horizontal and vertical collision protection ensures that system re-starts testing after any unwanted physical intervention. This prevents wastage of reagents, saves test time and increases life of probe

Multi functional Probe

Probe has flexibility to work even as a mixer in case in-built mixer does not work

Probe with Capacitance based liquid level sensor

Probe with liquid level sensor checks and indicates the presence of adequate sample or reagent in the container before starting testing process. Thus prevents unwanted interruptions in testing process



ROBUST MULTI-FUNCTIONAL SOFTWARE

REFLEX Testing Functionality

Allows user to program Low & High panic value for a particular test which triggers auto-testing of assigned tests which ensures faster and comprehensive reporting

Dynamic & Real-time display of Test Running Status for quicker decision making

- Running status of reagent tray, Sample tray & reaction tray
- Real-time monitoring of Reaction curve



On board inventory management

Real-time monitoring of reagent residual volume saves reagent cost & time

In-built full QC Program

- Provision to run 3 levels of control with Levey Jennings graph which gives confidence in reporting with multiple rules (1SD, 2SD and 3SD)
- Reagent, Calibrator & Control lot monitoring



User friendly Bi-Directional LIS Interface

FIRST-IN-CLASS ON-BOARD WARM-WATER LAUNDRY SYSTEM

In-built warm-water washing system ensures improved cleaning process and at the same time saving cost of additional consumables like detergents etc

Automatic omni-directional 7-step cleaning and drying ensures thorough cleaning for accurate results

Separate tubing for disposal of hard and soft water waste preventing errors due to carry-over



OTHER FEATURES

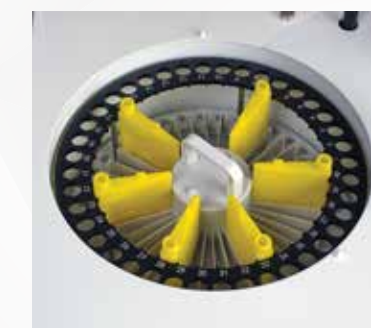
"Intelligent" Mixing Arm

- User defined, variable three level mixing speed ensure thorough mixing
- Accurate performance of regular and immunoturbidimetric assays
- Independent cleaning station for mixer which prevents carry-over ensuring high precision



Removable & flexible Sample – Reagent Disc

- 40 Open position for reagent & samples respectively
- Facility to use primary & variable sample cup as well as non fixed position for Sample, Control, Calibrator & STAT samples
- Two bottle sizes of 18 mL or 5 mL with unique design to reduce reagent dead volume
- Optional internal Reagent & Sample barcode reader makes the operation user friendly & ensure correct result reporting



Reaction tray

- 60 reusable plastic reaction cuvettes which is also scanned before performing the test which means less recurring cost without compromising on quality. To assure precise results
- Individual replacement of cuvette offer lower consumable cost





- Multi functional Probe with Collision-Protection System and Capacitance based liquid level sensor
- Robust Multi-functional Software
- First-in-Class On-board Warm-water Laundry System

TECHNICAL SPECIFICATIONS

| | |
|-------------------------|--|
| Throughput | Upto 200 Tests/hour |
| Principle | Photoelectric Colorimetry |
| Analysis method | End points, Fix-time (two points), Kinetic, Colorimetry, Turbidimetry, Two Wavelength, Double Reagent, Multi-Standard etc. |
| Sample Disc | 40 Sample Positions, including Standard, QC and STAT positions can use Original tube (Primary tube) or Serum Cup |
| Sample Volume | 1.5 ~ 50 µL (increment by 0.1 µL) |
| Reagent Disc | 39 reagent positions and 1 diluent position, 20mL reagent bottle with cooling system |
| Reagent Volume | R1: 150 µL - 300 µL, R2: 10 µL - 250 µL |
| Refrigeration | Yes, Cooling by Peltier & Liquid cooling system |
| Reaction Cuvettes | 60 reusable plastic cuvettes (optical path 5mm) |
| Reaction volume | 180µL~ 350µL (increment by 1 µL) |
| Probes | 2 probes, one for integrated reagent /sample dispense, One for mixer |
| Sample Probe | Liquid level detection Collision protection in both vertical and horizontal directions |
| Quality Control | Quality Control program with Levey Jennings chart, Multiple Lots, QC charts, etc. |
| Cleaning system | Automatic 7-step warm water washing |
| Light Source | Halogen-Tungsten Lamp (12V, 20W) |
| Wavelength | 9 positions provided between 300 ~ 700 nm |
| Photometry Range | 0.0000~4.0000Abs |
| Reaction Temperature | 37 ± 0.1°C |
| Computer | External PC |
| Communication Interface | Instrument / Computer : RS-232C, Network Port (can be expanded) |
| Operating system | Windows XP or Windows 7,8,10, friendly interface |
| Power Supply | ~100-220V, 50/60Hz (AC) |
| Dimensions | 415mm(W) X 565mm(L) X 385mm(H) |
| Weight | 28 Kgs |



For more information contact:

022 6155 9355 | customersupport@arkray.co.in

ARKRAY Healthcare Pvt. Ltd. 701-702, Opulence, 6th Road, TPS III, Santacruz (E), Mumbai - 400055, Maharashtra, India.

arkray

Upgrade to First in Class Features with,

AutoChem™ Xact Pro

Fully Automatic Clinical Chemistry Analyzer



www.arkray.co.in

arkray healthcare Pvt. Ltd.