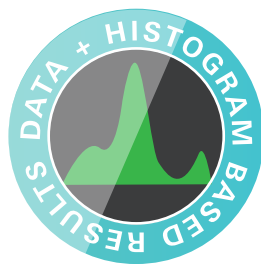
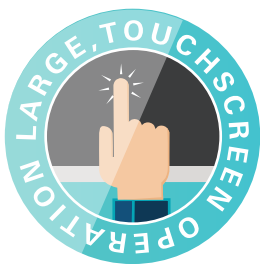
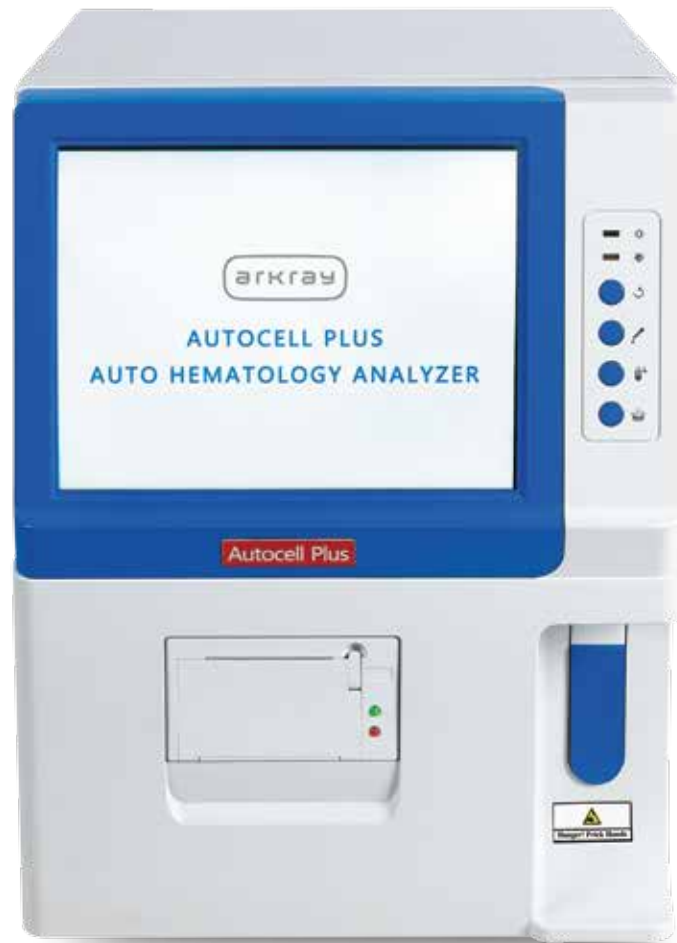




# AutoCell Plus

3 Part WBC Differential Automated Hematology Analyzer



# AutoCell Plus

3 Part WBC Differential Automated Hematology Analyzer

## LARGE TOUCH SCREEN DISPLAY

- Easy analysis of patient data on single screen ensuring efficient work-flow
- 10.4" color touch-screen

## DATA + HISTOGRAM BASED RESULT

- 20 parameters numerical data & 3 histograms
- Results are displayed as group of "data + histogram" for each parameter enabling easier correlation.

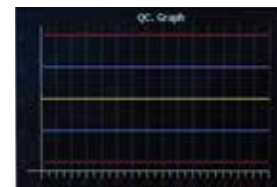


## DUAL SAMPLE MODE & SMALL SAMPLE VOLUME

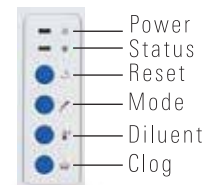
- Just 9 µL whole blood required for test - Very useful for pediatric & geriatric patients where sample collection may be very difficult
- 20 µL Pre-dilution mode - Automatic dilution in case of capillary sample by analyser which minimizes manual dilution-related errors.

## OTHER IMPORTANT FEATURES

- Direct access Clog removal key saves time for user by not needing to come back to main menu.
- Comprehensive built-in QC program for up to 10 lots with X-R, X-B, X-D CV value.
- Flexibility of dual calibration (Automatic & Manual calibration) allows user to calibrate the instrument according to his need to ensure the accuracy of measurements (results)
- Dual chamber for WBC & RBC makes faster test results with more accurate & avoids cross-contamination
- Reagent depletion alarm for Lyse, Cleanser and Diluent, as optional function (Liquid Sensors)
- 10,000 test results with histogram to meet all requirements
- Auto background measurement during start-up for ensuring trouble-free operation
- Internal thermal printer or facility to connect optional external printer
- RS232 interface & PC connectivity



QC Program



External Connections

## TECHNICAL SPECIFICATIONS

<b>Principle</b>	Electric impedance for counting and SFT method for Hemoglobin
<b>Test Parameters</b>	WBC, LYM#, MID#, GRA#, LYM%, MID%, GRA%, RBC, HGB, HCT, MCV, MCH, MCHC, RDW-CV, RDW-SD, PLT, MPV, PDW, PCT, P-LCR and 3 Histogram for WBC, RBC and PLT
<b>Throughput</b>	Up to 60 samples per hour
<b>Sample Volume</b>	Whole blood - 9µL; Pre-dilution Blood - 20 µL
<b>Aperture Diameter</b>	WBC : 80 µL, RBC : 50 µL
<b>Data Memory</b>	10,000 sample results including histograms, Available to increase storage by expanding memory card
<b>Printout</b>	Built In thermal printer, various print-out formats, external printer optional
<b>Input</b>	Mouse and keyboard, connected by USB port
<b>Interface</b>	USB x 3, RS232 x2
<b>Working Conditions</b>	Temperature : 15-35 °C, Humidity: <80%; Atmospheric pressure :70 Kpa-106Kpa
<b>Power Supply</b>	AC220+22V, 50+1Hz
<b>Dimension &amp; Weight</b>	325 x 370x545 mm (L*W*H) & 16 Kg (net), 25 Kg (gross)

0119/Ver 1.0  
00060000740

For more information contact: \_\_\_\_\_ | 022 61559355 | customersupport@arkray.co.in  
ARKRAY Healthcare Pvt. Ltd. 701-702, Opulence, 6th Road, TPS III, Santacruz (E), Mumbai - 400055, Maharashtra, India.